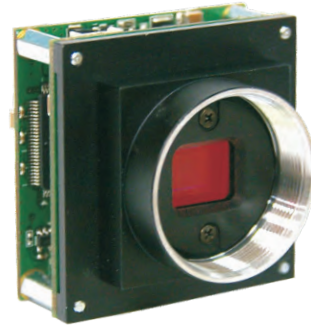


# USB2.0 Board Cameras

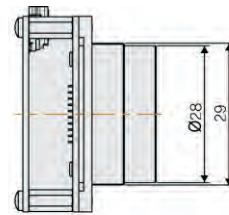
<b>USB 2.0</b>	<b>CCD</b>	<b>+5V GPIO TTL</b>	<b>40x40 mm</b>
<b>CS MOUNT</b>	<b>C MOUNT</b>	<b>TRIGGER</b>	<b>PLUG&amp;PLAY</b>
<b>CE</b>	<b>KOR</b> Made in Korea		



## Key Features

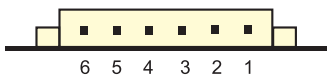
Board-type USB 2.0 CCD Camera  
 HALCON, Labview, Mil  
 Camera Standard  
 - Genlcam  
 Plug & Play  
 Trigger input range : +3V~5V(TTL)

## Dimension (Unit : mm)



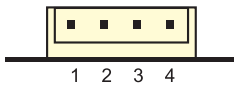
## Pin map

**CON1**

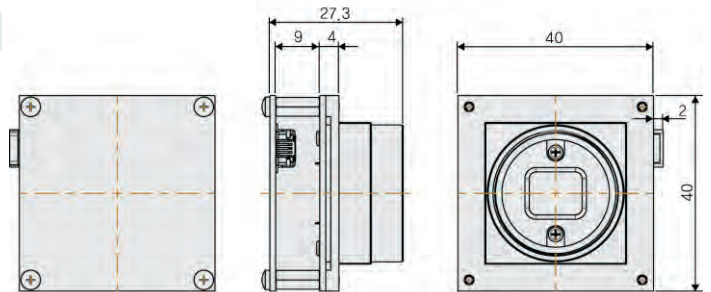


1. GND
2. Trigger(Input)
3. Strobe(Output)
4. GPIO 1(I/O)
5. GPIO 2(I/O)
6. GND

**CON2**



1. DAMP +
2. DAMP -
3. GND
4. DRV +



## Download (File name)

ex) SDK download:

CREVIS Site ▶ Search window ▶

SDK : MCamU\_Basic.zip

Model (Mono)	MV-BV37U	MV-BV27U	MV-BX37U	MV-BS27U	MV-BU17U
(Color)	MV-CV37U		MV-CX37U	MV-CS27U	MV-CU17U
Sensor size	1/3"	1/2"	1/3"	1/2"	1/1.8"
Image Sensor	CCD	CCD	CCD	CCD	CCD
Resolution	640 x 480	640 x 480	1024 x 768	1280 x 1024	1600 x 1200
Pixel size (μm)	7.4 x 7.4	9.9 x 9.9	4.65 x 4.65	4.65 x 4.65	4.4 x 4.4
Max Frame Rate	70fps	70fps	30fps	15fps	12fps
AOI Modes	Vertical				
Binning Modes (Mono only)	Vertical, Horizontal				
Synchronization	Freerun, Software Trigger, External Trigger				
Trigger Modes	Timed, Trigger width				
GPIO	TTL GPIO 2ch				
Shutter	Global				
Shutter Speed	10μs~1/Acquisition Frame Rate				
Pixel Data Formats	Mono8/10/12/14 Mono8, Bayer8, RGB8				
Gain	0dB ~ 26dB				
Gamma	1, 0.45, 0.7, LUT				
Exposure Control	Programmable via the camera API, External trigger signal				
Interface	USB 2.0				
Lens Mount	CS mount (Option : C mount)	C mount	CS mount (Option : C Mount)		
Weight	<41g				
Dimension	40mm x 40mm x 10mm				
Temperature	-5℃ to 45℃ (Operating) / -20℃ to 60℃ (Storage)				
Power consumption	1.9W	1.9W	1.5W	1.9W	2.3W
Power Requirements	+5V Via Mini B Type USB Cable				
Conformity	CE, RoHS				
Warranty	3 years				